



Tuesday 18th December 2007

ImpediMed Limited wishes to advise that CEO Greg Brown is delivering the attached roadshow presentation to various institutional investors and broking houses during the remainder of this week.

The presentation provides an introduction to the company.

A handwritten signature in blue ink, appearing to read 'P. Auckland'.

Phil Auckland
CFO & Company Secretary

ImpediMed Limited

Surviving cancer without compromising lifestyle



ImpediMed overview

- Australian company – ASX Listed
- Listing raised \$18 million
- Acquired San Diego based BIS company Xitron Technologies
- Professional investors - Versant ventures (Menlo Park California), Starfish ventures
- Internationally experienced management team – Digene Corp., Roche, & AMCC
- ISO 13485 2003 std Quality system



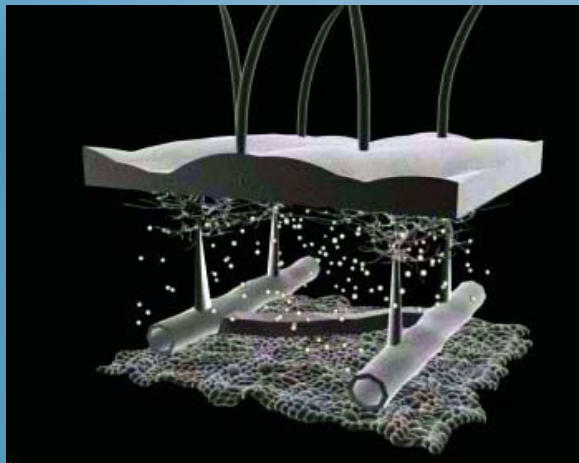
Lymphoedema – what is it?

Lymphatic system

- Transports and filters waste products of the cells
- It is the primary component of the immune system

Lymphoedema - Primary and secondary

- breakdown of the lymphatics where transport capacity falls
- Can be primary (genetic) or secondary - often a complication of cancer treatment – surgery, radiotherapy, chemotherapy
- Painful, lifelong condition - no cure, adversely affects quality-of-life



Current care and diagnosis

- Current diagnosis and standard of care
 - Lymphoedema is a chronic debilitating disease that is frequently misdiagnosed, treated too late, or not treated at all
J Nucl Med 03; 44:43–57
 - Patients often suffer in silence when their primary care physician or surgeon suggests that the problem is mild & little can be done
J Nucl Med 03; 44:43–57



Lymphoedema prevalence

- Approximately 10 million Americans, as an example, have lymphoedema secondary to breast and pelvic cancer therapy, recurrent infections, injuries, or vascular surgery

J Nucl Med 2003; 44:43–57

- 32 percent of women aged 45 years and younger treated for breast cancer had persistent swelling in the hand and/or arm 3 years after surgery. The incidence of episodic swelling was 54%

US National Cancer Institute Newsletter April 2007

- Lower extremity lymphoedema resulting from treatment of pelvic cancer also occurs. Reported frequency of secondary leg lymphoedema ranges from 10% to 49%

J Nucl Med 2003; 44:43–57

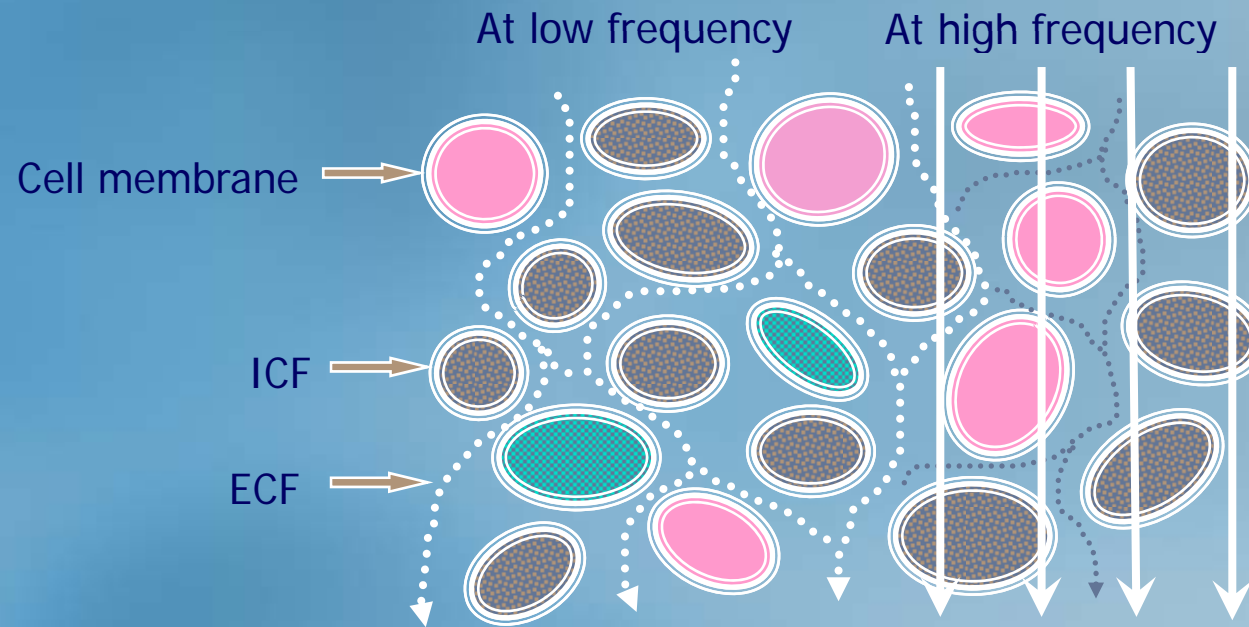
Why ImpediMed is well positioned

Targeting prevention of lymphoedema progression



1. Technology validation

- BIS technology measures the extra-cellular fluid of limbs directly



- Over 10 years of peer reviewed publications since 1996 demonstrating early detection, clinical assessment and risk assessment of Lymphoedema
- First bioimpedance technology to receive FDA clearance for the clinical assessment of unilateral arm lymphoedema

2. Commercial and regulatory status



■ XCA

- First FDA cleared medical device for the clinical assessment for uni-lateral lymphoedema of the arm
- Single low frequency – patented
- Uni-lateral arm only – control limb
- Distribution building
- Longer term homecare product



■ SFB 7

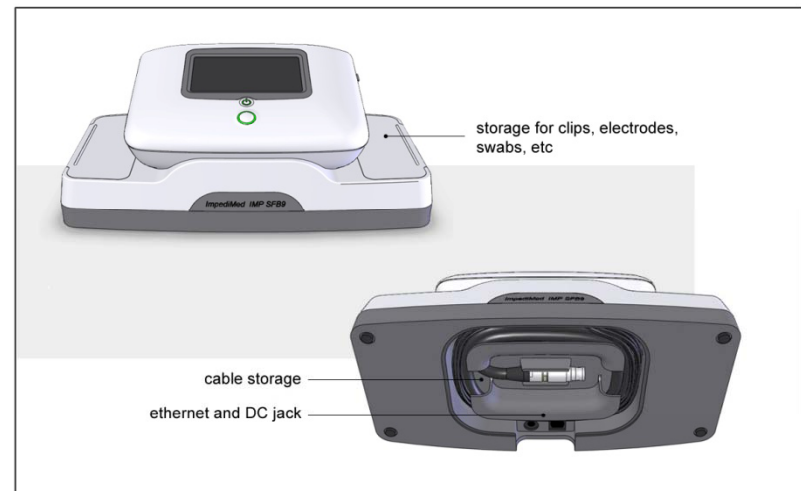
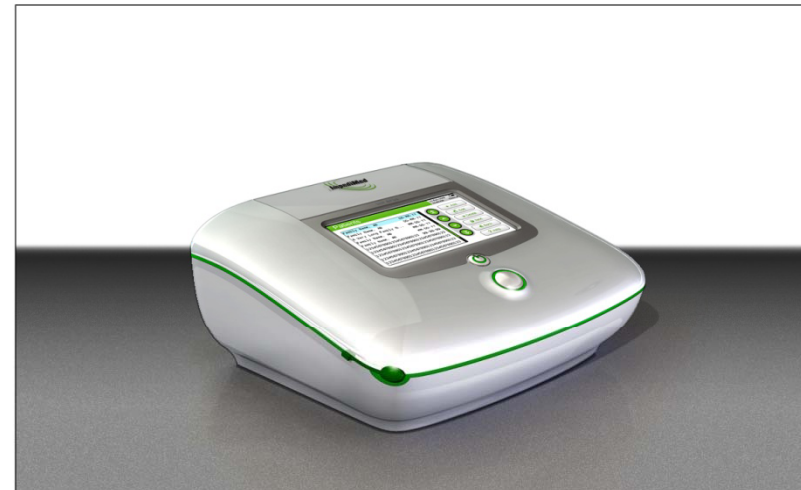
- BIS research device – not a clinical device
- FDA submissions planned- for the clinical assessment for uni- & bi-lateral lymphoedema of the arm and legs 2008
- Over 10 years of peer reviewed science since 1996 built on BIS technology
- Distribution building

2. Commercial and regulatory status (continued)

■ SFB 9

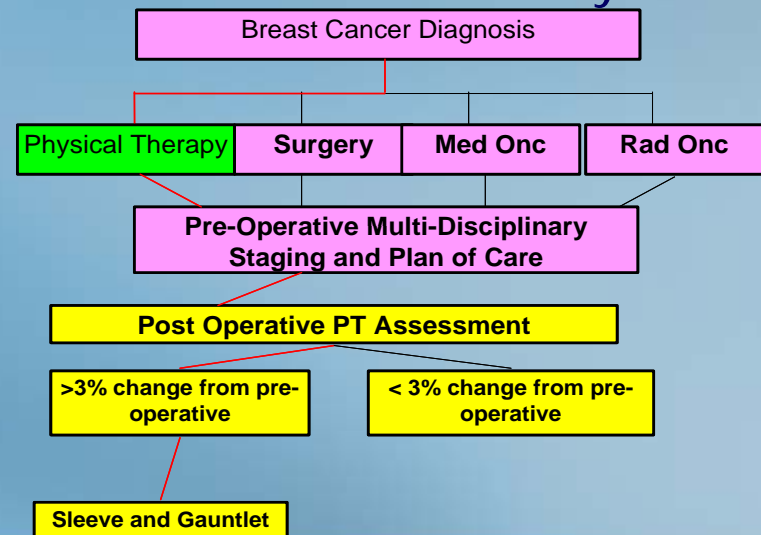
- Clinical routine device
- FDA submission for the clinical assessment for uni- & bi-lateral lymphoedema of the arm and legs - targeting 510K specials to the SFB7
- Prototype in late 2008 for trials
- Target commercial launch in 2009
- Locked in revenue streams

Picture - concept only

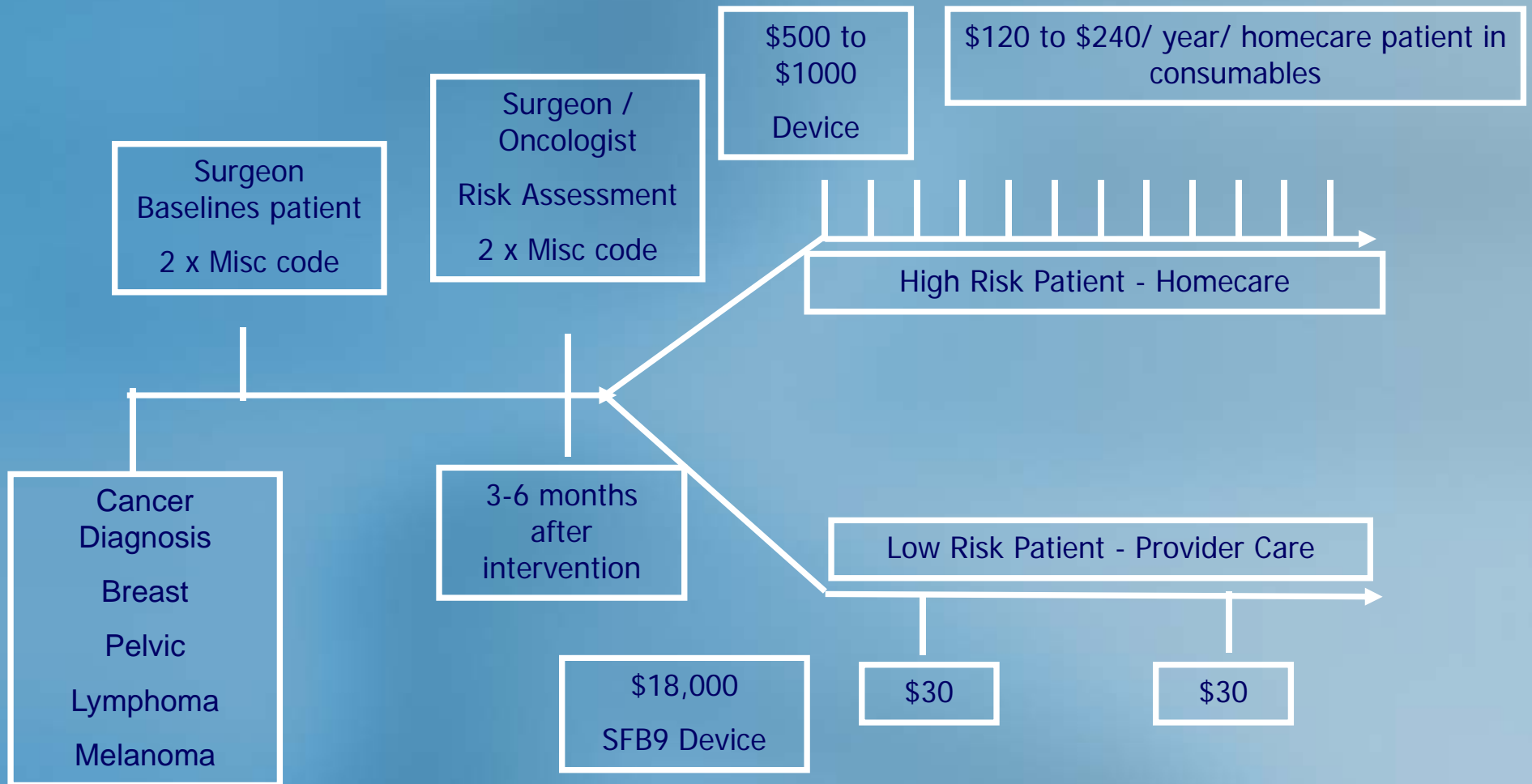


3. Building clinical data supporting early detection

- Prospective NIH/NCI trial in breast cancer patients started 2000 and completed end of 2006
- The 5 year study took measurements using a standard volumetric technique (Perometer) from baseline
- Lymphoedema where detected early- 2 week regime of compression sleeve
- Early detection, early intervention arm - no woman progressed to develop chronic (Stage II or III) lymphoedema over the course of the study
- Numerous publications proposed
 - Clinical outcome publication
 - Health economic analysis
 - Quality of life analysis



4. ImpediMed targeting proposed new clinical paradigm: pre-emptive care



5. Reimbursement – targeting miscellaneous codes until category one code is available

Code	Major Title	Minor Titles	Excludes
457	Noninfectious disorders of lymphatic channels		
457.0	Postmastectomy lymphedema syndrome	Elephantiasis (due to mastectomy) Obliteration of lymphatic vessel (Mastectomy)	
457.1	Other Lymphedema	Elephantiasis (nonfilarial) NOS Lymphangiectasis Lymphedema: acquired (chronic),praecox,secondary	Elephantiasis (nonfilarial): congenital (757.0) eyelid (374.83) vulva (624.8)
Code	Description		Payment
97001	Physical therapy evaluation		US\$63.43
97140	Occupational therapy evaluation		US\$62.90
97530	Physical therapy re-evaluation		US\$29.56

- With Miscellaneous codes for Surgeons for BIS bioimpedance reading
- With Miscellaneous codes for Oncologists for BIS bioimpedance reading
- With Miscellaneous codes for Therapist for BIS bioimpedance reading

6. Strategic partnerships

- Decongestive therapy schools (CTS)
 - Norton's and Vodder (global)
 - Estimated 3000 to 5000 specialist therapists in the US
- Compression sleeve suppliers (global)
 - Targeting distribution partners
- Physicians and aged care (US only)
 - Targeting distribution partners
- Surgeons / oncologists (Global)
 - Targeting US companies with managed care, surgeon and oncologist sales team
- European Diagnostic Network EDN (Europe)
 - Launching European effort



7. Estimated market potential – significant potential

Summary - US lymphoedema	Total Device Market	Annual Consumable Market
Breast Cancer – Home devices & consumables	\$ 493	\$ 142
Breast Cancer – Consumables provider market		\$ 71
Pelvic Cancers – Home devices & consumables	\$ 801	\$ 231
Pelvic Cancers – Consumables provider market		\$ 82
Clinical Device Market	\$ 3,138	
Total lymphedema	\$ 4,432	\$ 527

Table in Millions of USD – assumes 100% adoption of new clinical approach to Lymphoedema

Other ImpediMed opportunities

Hydration and other imaging applications



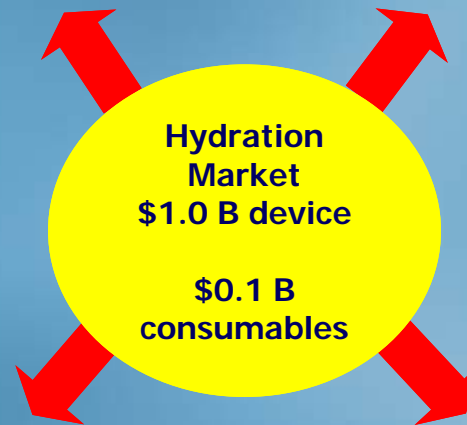
ImpediMed hydration/body composition market targets

Cachexia market

- Chemo
- Elderly
- AIDS
- Dialysis

Research markets

- New drug development
- Nutritional studies



Imaging markets

- DEXA suppliers
- IR imaging
- MRI

Dialysis market

- Dry mass market
- Fresenius relationship

Targeting diagnosis of metabolic disorder syndrome

- Contracted research with a European university
- Visceral / subcutaneous abdominal fat differentiation
- BIS application – imaging modality to quantitate the difference in abdominal fatness
- Will be a 1 minute reading with proprietary abdominal electrode – expanding SFB7 and SFB9 utility
- Reimbursement presently for CT scan of \$460 (CPT 74170) to MRI \$705 (CPT 74182)
- Associated with metabolic disorder syndrome
 - heart disease
 - hypertension
 - insulin resistance
 - type II diabetes mellitus

Senior Management

Greg Brown:	CEO	
Digene	– US/Europe :VP Global Strategic Marketing	6 Yrs
Roche	– Switzerland/USA (NY) : Global Marketing Director	4 Yrs
Baxter	– Australia/Germany/UK : Sales & Marketing Director	9 Yrs
Phil Auckland:	CFO / COO	
PanBio Ltd	– CFO : Listed, Acquisitions, Restructuring, Chg Mgmt	7 Yrs
Motor Ind/Dist'n	– Jaguar/RoverAust, Mazda Aust, Retail GM	10 Yrs
Corp Finance	– KPMG, Humes Steel, Pioneer Concrete, Suncorp Fin	6 Yrs
Jack Butler:	VP Sales and Marketing US	
Digene	– Director North American Sales	5 Yrs
Roche	– USA (NY) Sales Executive roles	12 Yrs
Steve Smith:	VP Operations - based in US	
AMCC	– CFO 03-04	5 Yrs
ST Microelectronics	- Director of Finance	5 Yrs

Board of Directors

Mel Bridges BSc FAICD – Non Executive Chairman

Chairman of Alchemia (ASX:ACL)

CEO and founder of Panbio Limited (ASX:PBO) until 2003; Founder and MD of Pacific Dx, sold to Baxter
Director of Delvtech . Previously Chairman of Peptech (ASX:PTD)

Martin Kriewaldt BA LLB (Hons) FAICD – Non Executive Director

Director of Peptech Limited (ASX:PTD), Suncorp-Metway Ltd (ASX:SUN), Oil Search Limited (ASX: OSH),
GWA International (ASX: GWT) and Campbell Brothers Limited (ASX:CPB) & Chair of Rem Comm

Cherrell Hirst AO MBBS FAICD – Non Executive Director

Medical doctor and a former practitioner in breast cancer diagnosis.

Director of Suncorp-Metway Ltd (ASX:SUN), QBF (also acting CEO), Peplin, Avant ML & IL, MBF Australia
Previously Chancellor of QUT 1994 – 2004

Jim Hazel – BEc FFin FAICD – Non Executive Director

Extensive banking career including Chief General Manager of Adelaide Bank Limited

Until recently MD of ASX-listed retirement village and aged care operation.

Chairman of Elders Rural Bank Limited, Chairman of Becton Living Pty Ltd and Director of Terramin
Australia Limited (ASX:TZN). Previous NED roles include SA Govt Financing Authority, Peptech Limited, St
Andrews Hospital Inc and Tourism SA

Michael Panaccio BSc (Hons) MBA PhD FAICD – Non Executive Director

Co-founder and Investment Principal of Starfish Ventures, Chairman of the Australian Biotechnology
Advisory Committee. More than 10 years with multinational pharmaceutical companies and work with
Nomura/JAFCO Investment (Asia) Limited

Risk management – key risks

- Risk to Secondary Lymphoedema Opportunity
 - Major clinical trials
 - Bilateral lymphoedema approaches
- Reimbursement & Regulatory Strategies
 - Securing necessary further FDA Approvals
 - Gaining reimbursement coding and coverage
- Intellectual Property
 - Ability to protect position
 - Competitor Challenges to IP
- Advancing technology
 - Competitor threat of new technology approaches
 - Supply threat – key component redesign
- Product Liability
 - Liability risks that are inherent in research and development, preclinical studies, clinical trials, manufacturing and the use as a medical device for diagnosing/monitoring conditions

Conclusion

- Business commercializing product range
- Market entry strategy facilitated by:
 - Building global distribution
 - Regulatory – first cleared device for Lymphoedema
 - Reimbursement - applying for category one CPT code
 - Building higher claims to limit competition and expand reimbursement
 - Commercial partnerships
 - Clinical trial programs
- Experienced team and Board